

K9 Safe - Secure Transport of Explosive Samples



K9 Safe

The K9 Safe was designed for the safe and secure transport of explosive samples. Such samples are used for operating with search dogs. Working quantities of explosives are also required to be moved on the road by EOD teams.

The K9 Safe combines the capabilities of our Mailsafe and DetSafe ranges in a compact, robust form.

Using the excellent heat resistance of the XPT blast protection material, as proven in the DetSafe range, the explosive samples will be well protected in the event of a vehicle fire.

Mounted to vehicle floor and able to be padlocked for security, the K9 Safe is operated from its front with simple but robust sliding bolts.

Key Features:

Steel Body with XPT Blast Protection Lining.

Bolts into Vehicle Floor. Padlock for Security

Front Opening with Robust Catches.

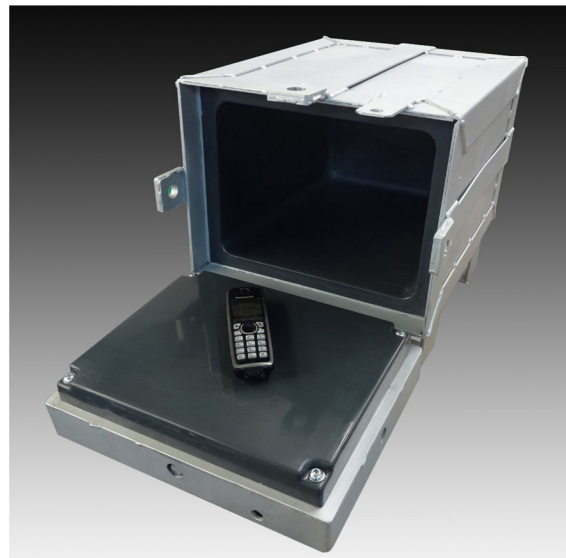
External Dimensions:

W 400mm x H 400mm x D 500mm

Internal Dimensions:

W 300mm x H 230mm x D 375mm

Weight: 63kg



K9 Safe Open - phone for purposes of scale