

Mailsafe 200 - Suspect Parcel Isolation

Mailsafe 200

Suspect mail - whether or not it turns out to be a real device - can cause great disruption to an organisation and its business continuity.



The Mailsafe 200 is designed to live alongside mail scanning equipment for the rapid, safe isolation of any package or box that is of concern.

Evacuation procedures can then be carried out in a safe manner. Use of the mailsafe may also reduce the extent of evacuation required within a facility.

This unit is large enough to take the range of standardised boxes used by UK and international courier companies.

If used in a parcel processing facility, it should contribute to business continuity and minimising disruption.

Key Features:

With side opening door.

External Dimensions: Height: 107cm/ 42",
Width: 102cm/ 40",
Depth: 97cm/ 38"

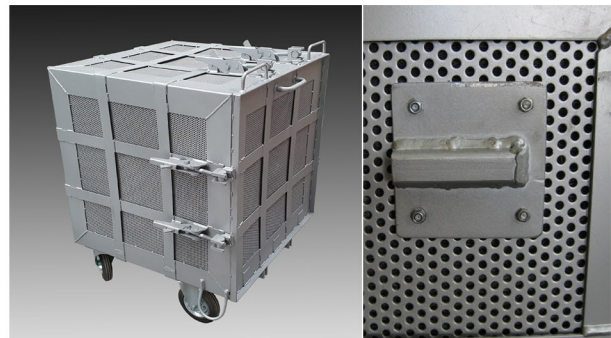
Internal Dimensions: Height: 71cm/ 28"
Width: 71cm/ 28"
Depth: 70cm/ 27.5"

Weight: 230kg/ 505 lbs

Protected cable channels in rear wall. - optional

Anchor points for tie down straps

Heavy duty caster wheels



The Mailsafe 200 is available with protected cable channels for the testing of pressurised equipment. These can be positioned to meet specific project needs.