

# Charge Box - Type 1: Lithium-Ion Battery Containment



## Charge Box - Type 1

It is during the charging cycle that Lithium-Ion batteries are most likely to catch fire. The Charge Box allows the battery to be safely contained whilst plugged into an external power source. In the event of 'thermal runaway', the flame and heat are contained within the Charge Box. This greatly reducing the risk of damage to the surrounding space, which could be the user's home or workspace.

The Charge Box can be secured to a hard point and is also lockable to protect high value batteries when left unattended. The units can be stacked for multiple users, are simple to use and need no maintenance.

### Key Features:

The Charge Box uses the proven XPT Blast Mitigation material to provide a heat and blast barrier that allows smoke to vent under control.

The design is adaptable to a variety of battery sizes for E-Bikes and wider industrial and commercial applications.

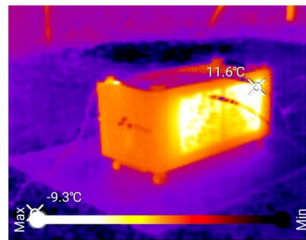
Simple and secure to use.

Thoroughly tested with detailed instrumentation.

Units can be stacked for fleet use.

Type 1: Internal Dimensions: 17.2 x 17.7 x 41.2cm

Weight: 22kg.



Detailed testing with high capacity batteries using thermal cameras and thermocouple probes to record performance.



The Type 1 Charge Box is optimised for the removable batteries that mount on the frame